

Oxford Instant Office

555 Briarwood Circle - Suite 115
Ann Arbor, MI 48108



Integrated
Real Estate
Services



Oxford Instant Office For Lease
555 Briarwood Circle Suite 115
Ann Arbor, MI 48108

1,180 Square Feet
Seats 6
6 Month Term
\$3,600/Month



Contact Karen O'Neil for
more information or to
schedule a tour.

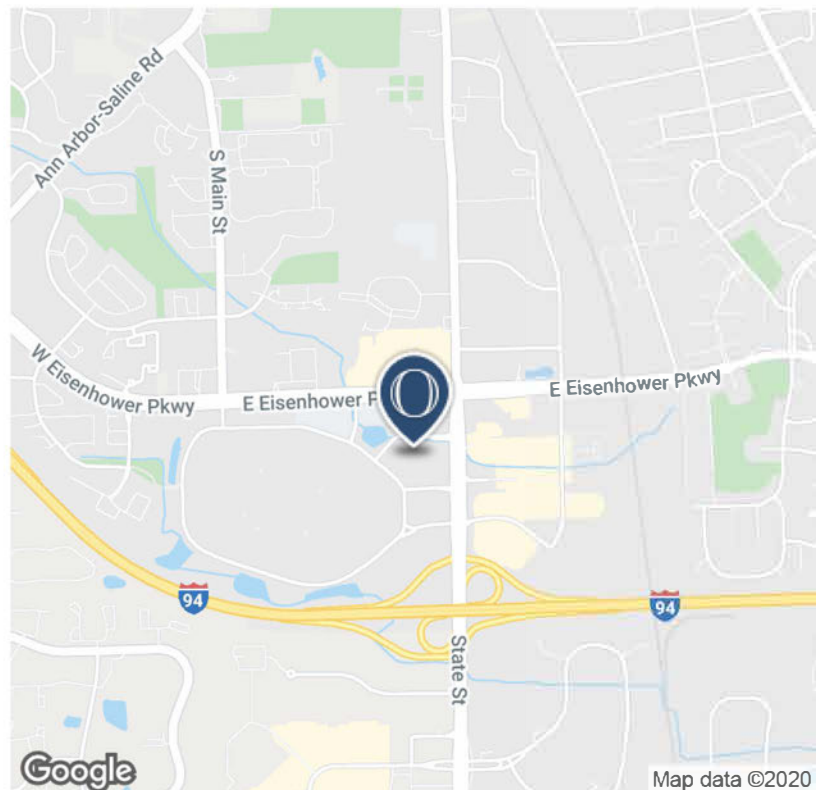
Office: 734.665.6500
Cell: 734.323.4263
koneil@oxfordcompanies.com

Oxford Instant Office

555 Briarwood Circle - Suite 115
Ann Arbor, MI 48108



Integrated
Real Estate
Services



OFFERING SUMMARY

Lease Rate:	\$3,600/Month
Available SF:	1,180 SF
Building Size:	80,696 SF
Date Available:	Immediate
Year Built:	1986
Renovated:	2014
Ceiling Height:	12'
Parking Ratio:	3.87
Zoning:	PUD
Submarket:	South Side Ann Arbor

PROPERTY OVERVIEW

555 Briarwood Cir. Three-story Ann Arbor office building located adjacent to Briarwood Mall and I-94.

Oxford has the largest selection of quality Ann Arbor office space. Contact our brokerage team to schedule a tour of our portfolio of Ann Arbor offices for rent.

UNIT HIGHLIGHTS

- 1,180 SF—Can easily accommodate nine employees
- Nicely appointed corner office with large open area and kitchenette
- Furniture included and WiFi ready
- 6 minutes to downtown Ann Arbor & U of M
- Within walking distance to hotels and restaurants, such as: Buffalo Wild Wings, Red Robin, Olive Garden, Romano's Macaroni Grill, & more
- Ample parking surrounding the building
- 24/7 on-call maintenance from new service center located 3 minutes away



Contact Karen O'Neil for more information or to schedule a tour.

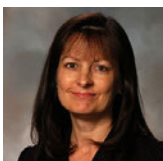
Office: 734.665.6500
Cell: 734.323.4263
koneil@oxfordcompanies.com

Oxford Instant Office

555 Briarwood Circle - Suite 115
Ann Arbor, MI 48108



Integrated
Real Estate
Services



Contact Karen O'Neil for
more information or to
schedule a tour.

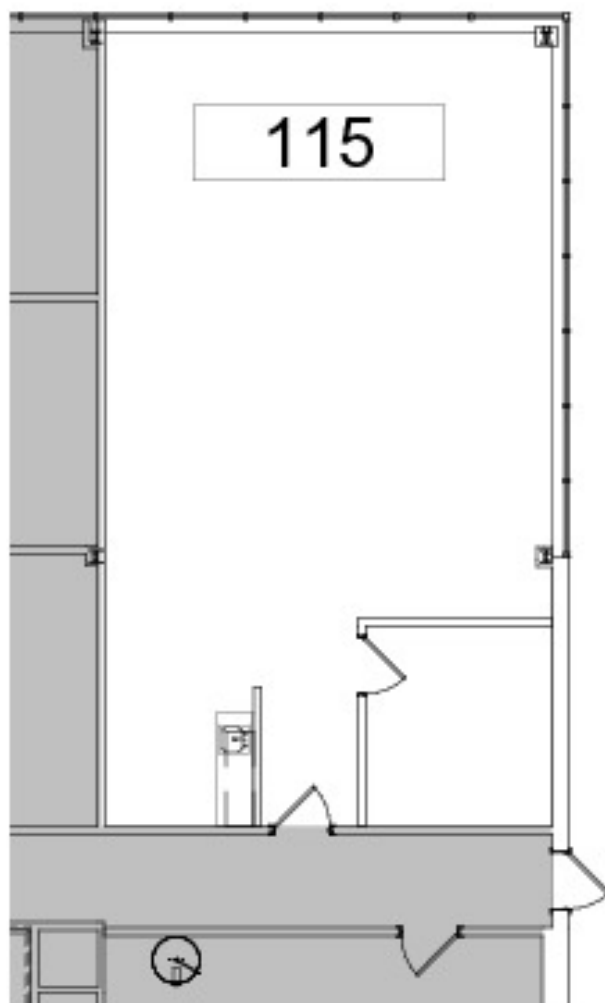
Office: 734.665.6500
Cell: 734.323.4263
koneil@oxfordcompanies.com

Oxford Instant Office

555 Briarwood Circle - Suite 115
Ann Arbor, MI 48108



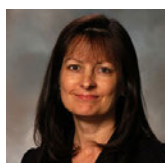
Integrated
Real Estate
Services



N
2 Suite 115 - Partial Level 1 Existing Floor Plan
115
5'-4" 10'-8" 21'-4" 3/32" = 1'-0"



N
1 Suite 115 - Level 1 Key Plan
115
16'-0" 32'-0" 1" = 160'-0"



Contact Karen O'Neil for
more information or to
schedule a tour.

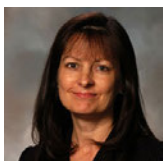
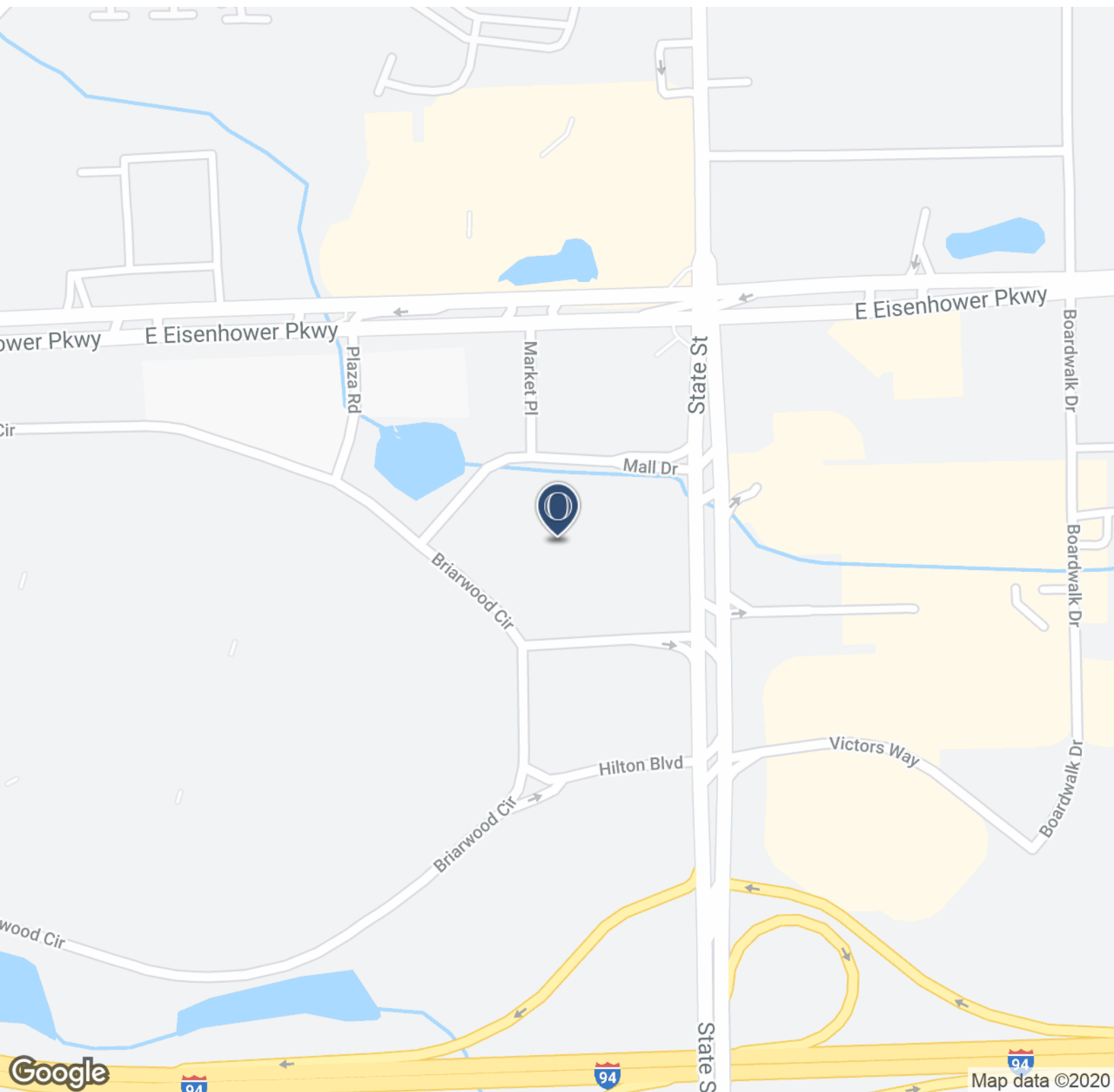
Office: 734.665.6500
Cell: 734.323.4263
koneil@oxfordcompanies.com

Oxford Instant Office

555 Briarwood Circle - Suite 115
Ann Arbor, MI 48108



Integrated
Real Estate
Services



Contact Karen O'Neil for
more information or to
schedule a tour.

Office: 734.665.6500
Cell: 734.323.4263
koneil@oxfordcompanies.com