

Oxford Instant Office
206 S. Fifth Ave. - Suite 185
Ann Arbor, MI 48104



Integrated
Real Estate
Services



Oxford Instant Office For Lease
206 S. Fifth Ave. - Suite 185
Ann Arbor, MI 48104

632 Square Feet
Seats 4-8
6 Month Term
\$1,900/Month



Contact Karen O'Neil for
more information or to
schedule a tour.

Office: 734.665.6500
Cell: 734.323.4263
koneil@oxfordcompanies.com

Oxford Instant Office

206 S. Fifth Ave. - Suite 185
Ann Arbor, MI 48104



Integrated
Real Estate
Services



OFFERING SUMMARY

Lease Rate:	\$1,900/Month
Available SF:	632 SF
Building Size:	12,180 SF
Year Built:	1930
Renovated:	2004
Zoning:	D1
Submarket:	Downtown Ann Arbor

PROPERTY OVERVIEW

Downtown Ann Arbor Instant Office. Great location, close to restaurants, and all the amenities of downtown Ann Arbor.

Oxford has the largest selection of quality Ann Arbor office space. Contact our brokerage team to schedule a tour of our portfolio of Ann Arbor offices for rent.

PROPERTY HIGHLIGHTS

- 632 Instant Office with seating for 4-8
- Furniture Included and Wifi ready
- Garden level office
- High visibility and accessibility located in the heart of downtown Ann Arbor
- Within walking distance of local retail and restaurants
- Underground parking structure a block away



Contact Karen O'Neil for more information or to schedule a tour.

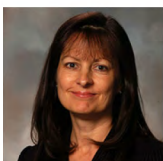
Office: 734.665.6500
Cell: 734.323.4263
koneil@oxfordcompanies.com

Oxford Instant Office

206 S. Fifth Ave. - Suite 185
Ann Arbor, MI 48104



Integrated
Real Estate
Services



Contact Karen O'Neil for
more information or to
schedule a tour.

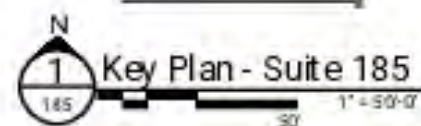
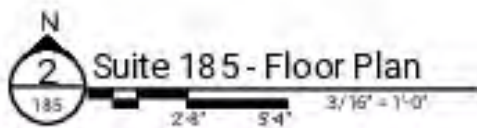
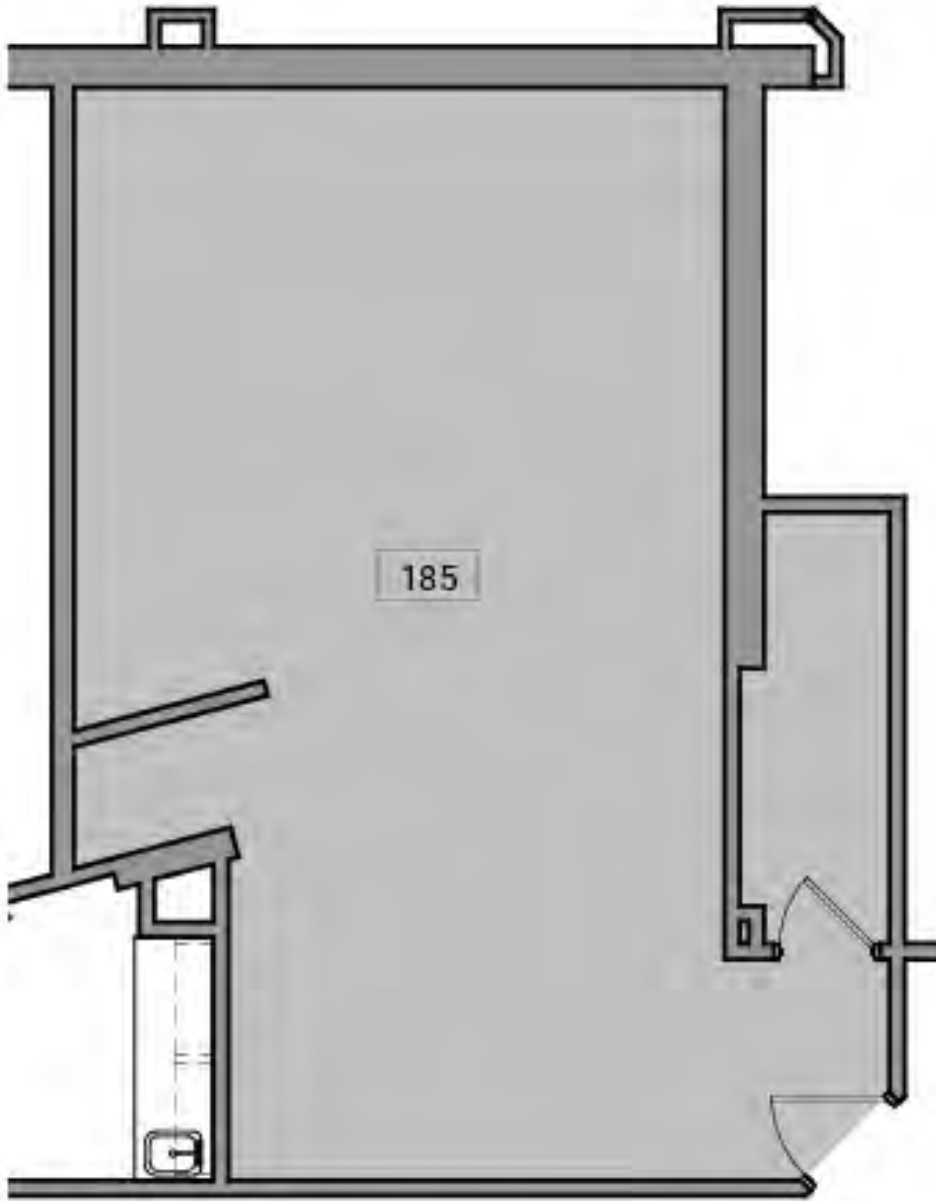
Office: 734.665.6500
Cell: 734.323.4263
koneil@oxfordcompanies.com

Oxford Instant Office

206 S. Fifth Ave. - Suite 185
Ann Arbor, MI 48104



Integrated
Real Estate
Services



Contact Karen O'Neil for
more information or to
schedule a tour.

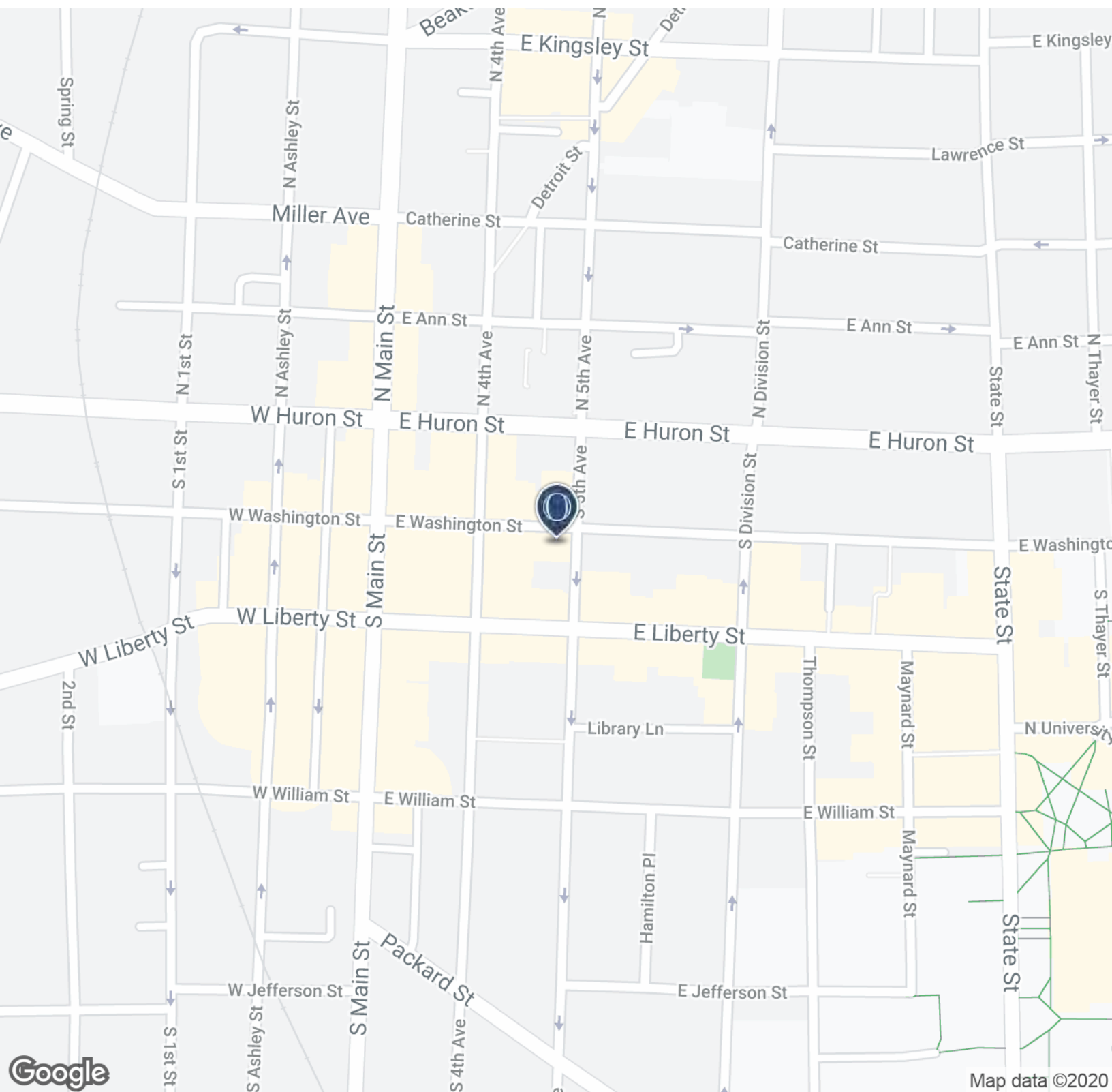
Office: 734.665.6500
Cell: 734.323.4263
koneil@oxfordcompanies.com

Oxford Instant Office

206 S. Fifth Ave. - Suite 185
Ann Arbor, MI 48104



Integrated
Real Estate
Services



Contact Karen O'Neil for
more information or to
schedule a tour.

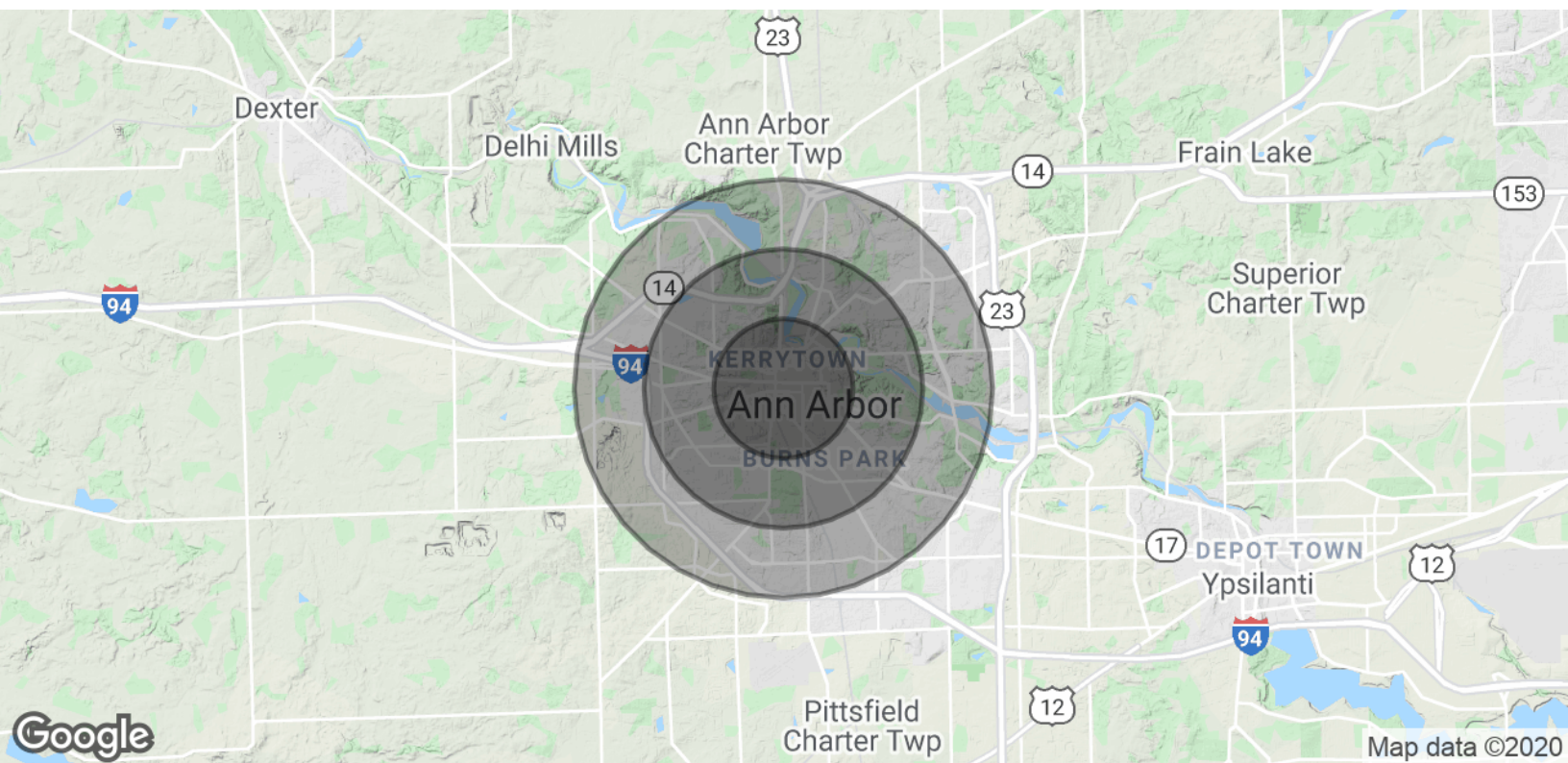
Office: 734.665.6500
Cell: 734.323.4263
koneil@oxfordcompanies.com

Oxford Instant Office

206 S. Fifth Ave. - Suite 185
Ann Arbor, MI 48104



Integrated
Real Estate
Services



POPULATION	1 MILE	2 MILES	3 MILES
Total Population	27,334	73,274	115,486
Average age	24.9	28.1	30.8
Average age (Male)	24.9	27.8	30.2
Average age (Female)	24.8	28.4	31.2

HOUSEHOLDS & INCOME	1 MILE	2 MILES	3 MILES
Total households	9,875	25,750	43,076
# of persons per HH	2.8	2.8	2.7
Average HH income	\$48,315	\$67,158	\$73,735
Average house value	\$312,172	\$319,299	\$323,728

* Demographic data derived from 2010 US Census



Contact Karen O'Neil for
more information or to
schedule a tour.

Office: 734.665.6500
Cell: 734.323.4263
koneil@oxfordcompanies.com