

Oxford Instant Office

308 S. State Street - Suite 23
Ann Arbor, MI 48104

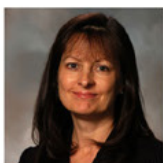


Integrated
Real Estate
Services



Oxford Instant Office For Lease
308 S. State Street - Suite 23
Ann Arbor, MI 48104

172 Square Feet
Seats 1
6 Month Term
\$500/Month



Contact Karen O'Neil for
more information or to
schedule a tour.

Office: 734.665.6500
Cell: 734.323.4263
koneil@oxfordcompanies.com

Oxford Instant Office

308 S. State Street - Suite 23
Ann Arbor, MI 48104



Integrated
Real Estate
Services



OFFERING SUMMARY

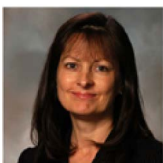
Lease Rate:	\$500/Month
Available SF	172 SF
Building Size:	10,600 SF
Lot Size:	0.1 Acres
Year Built:	1901
Zoning:	Commercial
Submarket:	Washtenaw W of 23

PROPERTY OVERVIEW

Downtown office space on South State Street across from the Diag and the heart of UofM's Central Campus

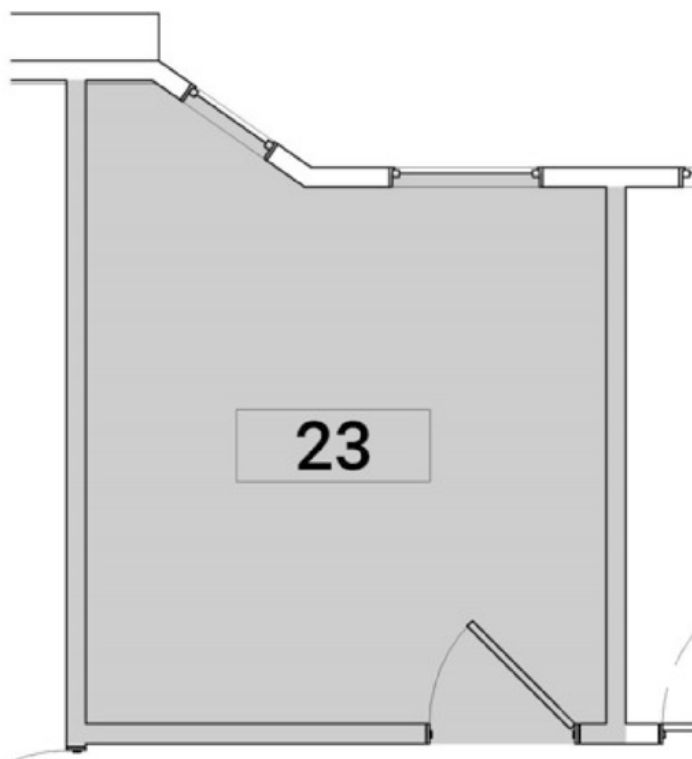
PROPERTY HIGHLIGHTS

- 172 SF Instant Office with seating for 1
- Furniture included and Wifi ready
- Prime Downtown location
- Across from U of M campus
- Surrounded by lots of restaurants, retail shops, and offices
- Minutes away from I-94 State Street exit
- Neighbors to Ben and Jerry's, PotBelly, SEE, Nickels Arcade and Bivouac



Contact Karen O'Neil for
more information or to
schedule a tour.

Office: 734.665.6500
Cell: 734.323.4263
koneil@oxfordcompanies.com



2 Exhibit B - Partial Existing Floor Plan
EX-A/B
N
2' 4' 8' 1/4" = 1'-0"



1 Exhibit A - Key Plan - Level 2
45' - 40' 0"



Contact Karen O'Neil for
more information or to
schedule a tour.

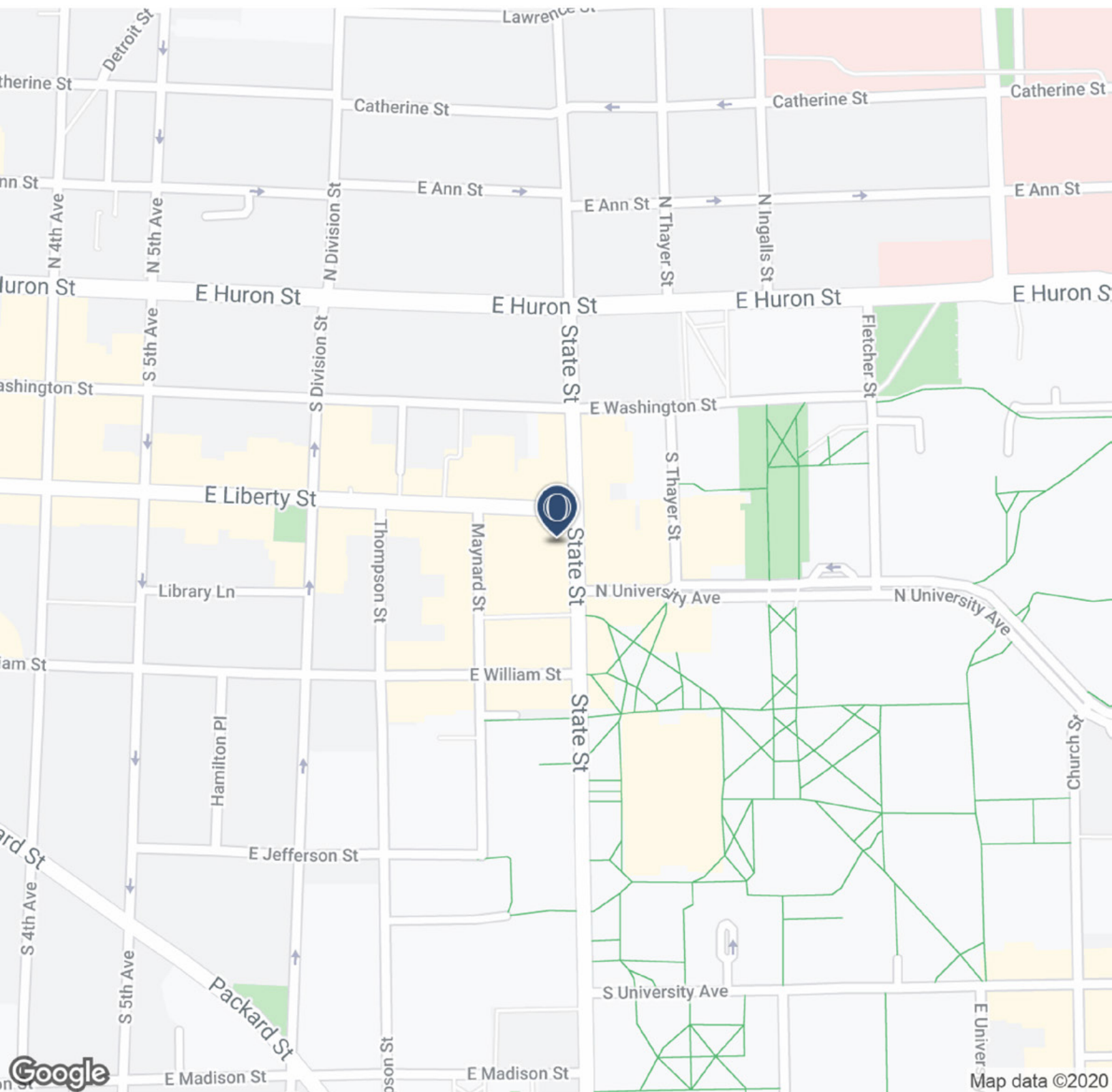
Office: 734.665.6500
Cell: 734.323.4263
koneil@oxfordcompanies.com

Oxford Instant Office

308 S. State Street - Suite 23
Ann Arbor, MI 48104



Integrated
Real Estate
Services



Contact Karen O'Neil for
more information or to
schedule a tour.

Office: 734.665.6500
Cell: 734.323.4263
koneil@oxfordcompanies.com