

Oxford Instant Office

315 E. Eisenhower Pkwy. - Suite B12
Ann Arbor, MI 48108



Integrated
Real Estate
Services



Oxford Instant Office For Lease
315 E. Eisenhower Pkwy. - Suite B12
Ann Arbor, MI 48108

1,516 Square Feet
Seats 4-8
6 Month Term
\$4,100/Month



Contact Karen O'Neil for
more information or to
schedule a tour.

Office: 734.665.6500
Cell: 734.323.4263
koneil@oxfordcompanies.com

Oxford Instant Office

315 E. Eisenhower Pkwy. - Suite B12
Ann Arbor, MI 48108



Integrated
Real Estate
Services



OFFERING SUMMARY

Lease Rate:	\$4,100/Month
Available SF:	1,516 SF
Building Size:	77,926 SF
Date Available:	Immediate
Year Built:	1986
Renovated:	2013
Ceiling Height:	9'
Parking Ratio:	3.0
Zoning:	O
Submarket:	South Ann Arbor

PROPERTY OVERVIEW

Beautiful Instant Office in Ann Arbor's bustling Southside. Oxford has the largest selection of quality Ann Arbor office space. Contact our brokerage team to schedule a tour of our portfolio of Ann Arbor offices for rent.

PROPERTY HIGHLIGHTS

- 1,516 SF Instant Office with seating for 4-8
- Furniture included and Wifi ready
- Beautiful Class A three-building office center
- Located across from Briarwood Mall at Eisenhower & Main St.
- 5 minutes to downtown Ann Arbor
- Immediate access to I-94 via S. State St. & Ann Arbor-Saline Rd.
- Floor to ceiling windows with spectacular views
- Ample parking with covered parking available
- Renovated common areas, including bathrooms and new awnings
- Locally owned and professionally managed with 24/7 on-call maintenance



Contact Karen O'Neil for more information or to schedule a tour.

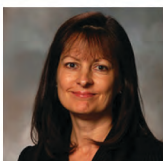
Office: 734.665.6500
Cell: 734.323.4263
koneil@oxfordcompanies.com

Oxford Instant Office

315 E. Eisenhower Pkwy. - Suite B12
Ann Arbor, MI 48108



Integrated
Real Estate
Services



Contact Karen O'Neil for
more information or to
schedule a tour.

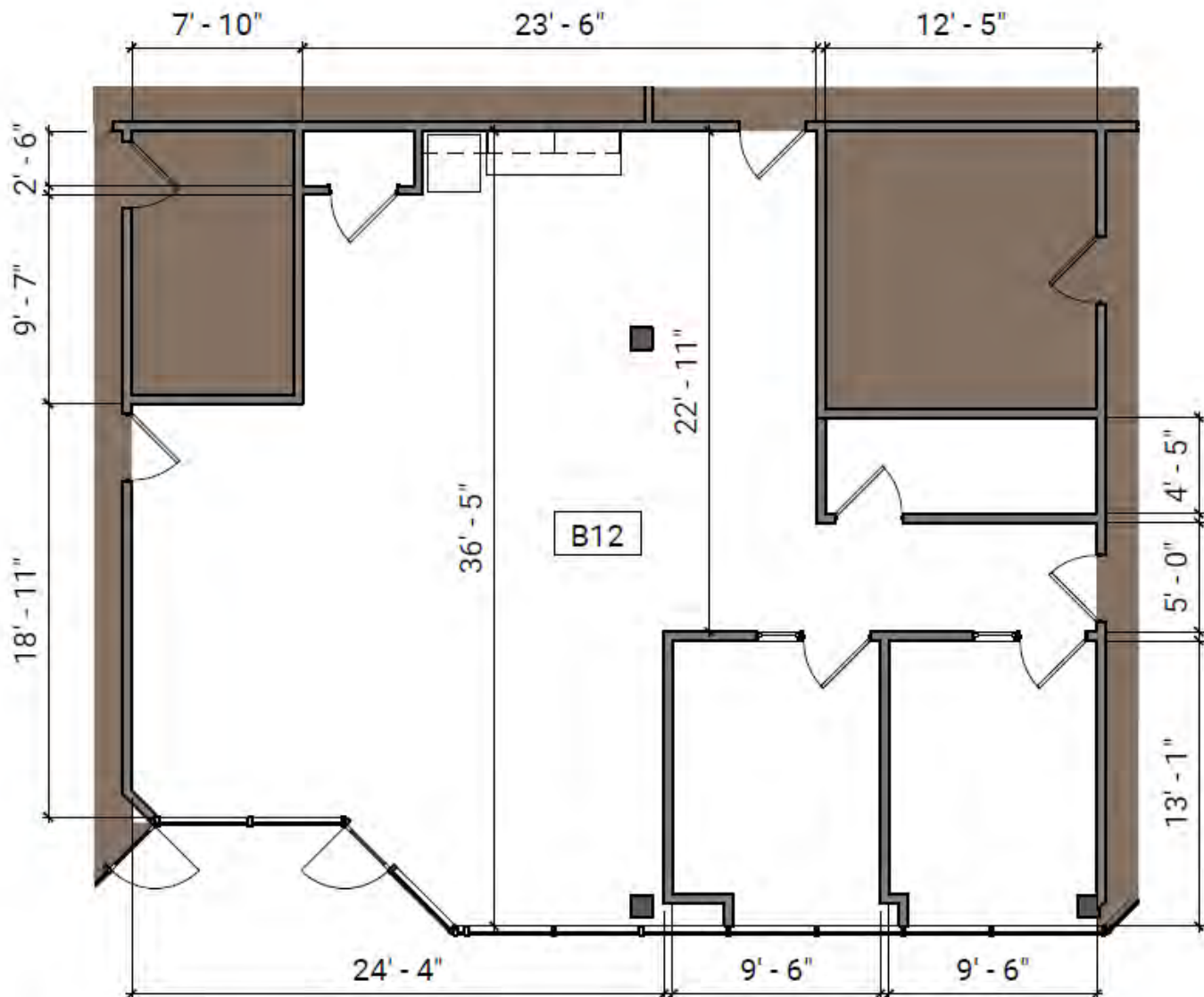
Office: 734.665.6500
Cell: 734.323.4263
koneil@oxfordcompanies.com

Oxford Instant Office

315 E. Eisenhower Pkwy. - Suite B12
Ann Arbor, MI 48108



Integrated
Real Estate
Services



2 Suite B12 - Existing Floor Plan
1/8" = 1'-0"



1 Key Plan - Garden Level
1" = 100'-0"



Contact Karen O'Neil for
more information or to
schedule a tour.

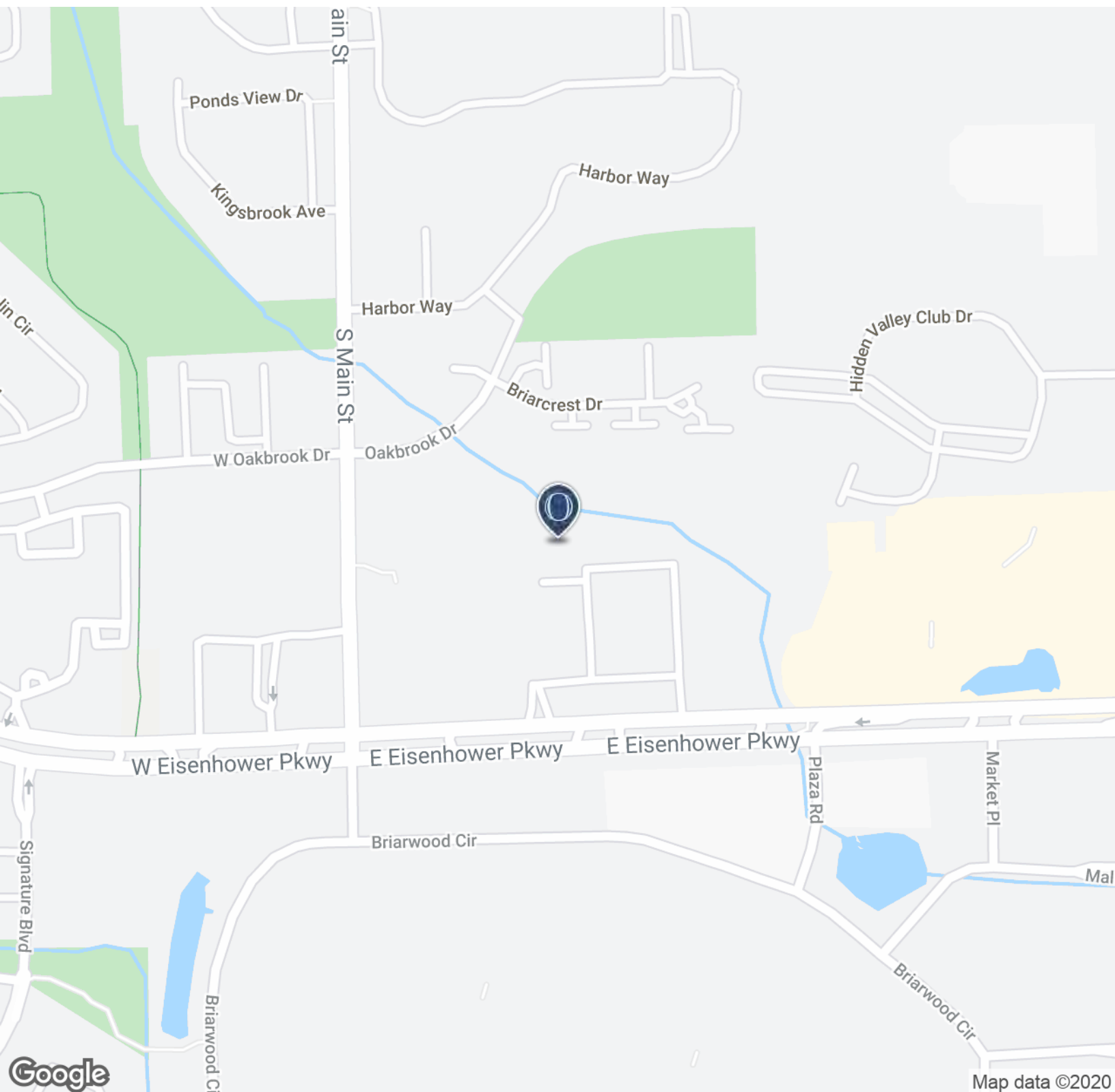
Office: 734.665.6500
Cell: 734.323.4263
koneil@oxfordcompanies.com

Oxford Instant Office

315 E. Eisenhower Pkwy. - Suite B12
Ann Arbor, MI 48108



Integrated
Real Estate
Services



Contact Karen O'Neil for
more information or to
schedule a tour.

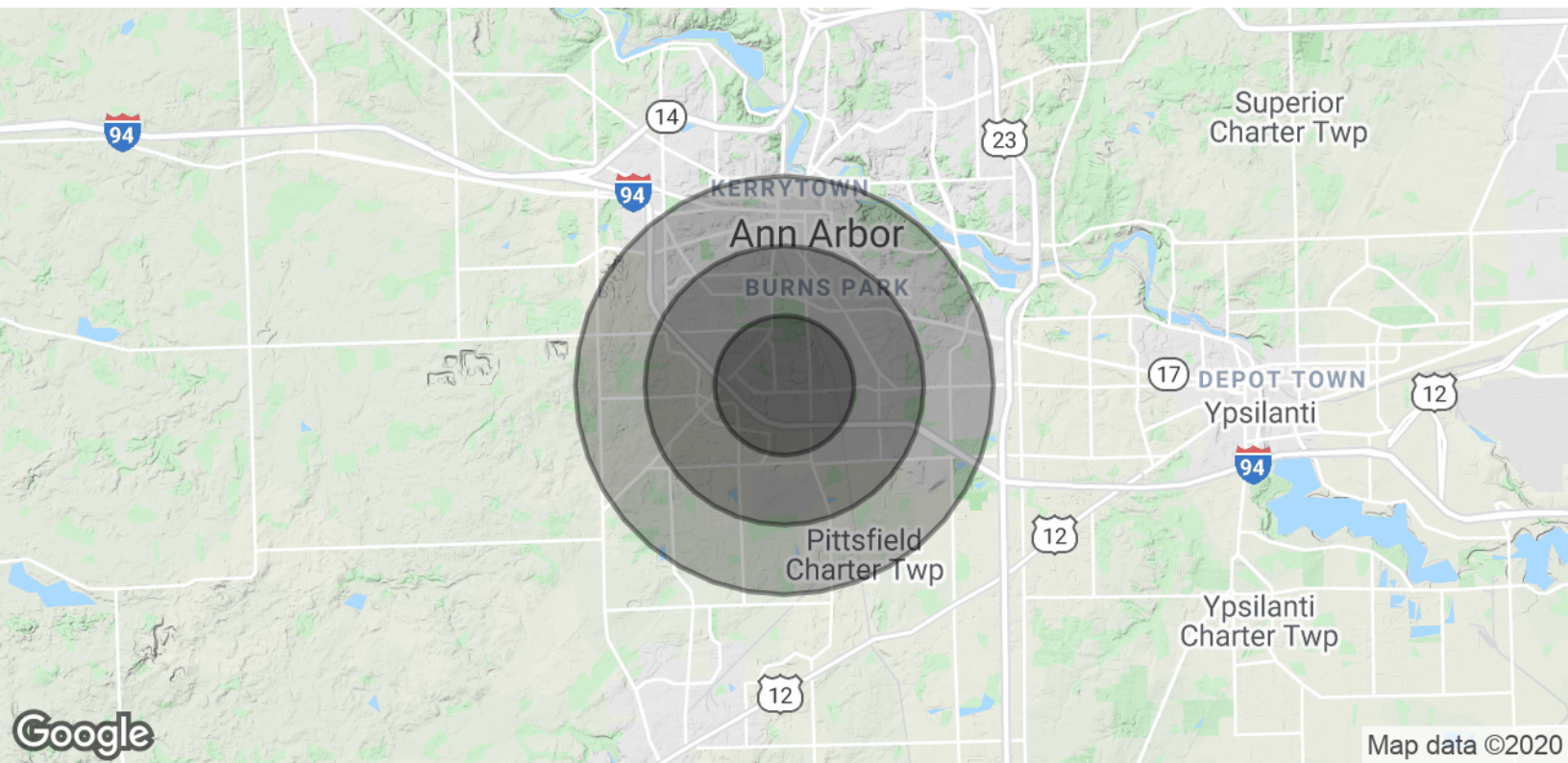
Office: 734.665.6500
Cell: 734.323.4263
koneil@oxfordcompanies.com

Oxford Instant Office

315 E. Eisenhower Pkwy. - Suite B12
Ann Arbor, MI 48108



Integrated
Real Estate
Services



POPULATION	1 MILE	2 MILES	3 MILES
Total Population	9,536	46,190	99,513
Average age	32.9	32.6	31.1
Average age (Male)	32.7	32.3	30.9
Average age (Female)	32.5	32.7	31.4

HOUSEHOLDS & INCOME	1 MILE	2 MILES	3 MILES
Total households	4,813	19,434	38,588
# of persons per HH	2.0	2.4	2.6
Average HH income	\$63,194	\$75,407	\$75,252
Average house value	\$221,066	\$316,738	\$316,929

* Demographic data derived from 2010 US Census



Contact Karen O'Neil for
more information or to
schedule a tour.

Office: 734.665.6500
Cell: 734.323.4263
koneil@oxfordcompanies.com